

SPEEDFLOOR

Engineered Transportable Concrete Floor System

TRANSPORTABLE CONCRETE FLOOR



FASTER

LIGHTER

EASIER

Building on a great idea . . .

The Speedfloor Transportable Concrete Floor involves the unique combination of cold rolled steel sections and concrete to form a transportable concrete floor.



TRANSPORTABLE CONCRETE FLOOR

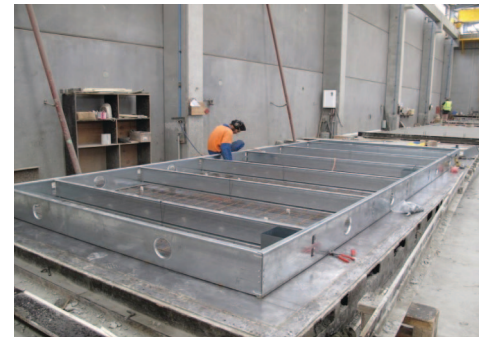


The galvanized steel sections are manufactured using the rollforming process for dimensional accuracy where they are punched, pressed and cut to length. The sections are simply assembled and placed upside-down on a flat surface over selected reinforcement mesh. The concrete is poured into the base and leveled to form a consistent thickness. After the initial cure the floor is lifted from the flat bed, flipped and is ready for the building frame to be attached.

The transportable floor has many features including:

- All service holes and connecting bolt holes are pre-punched into the boundary channels.
- Lifting eyes, pier positions and any frame hold down connections are factory fitted.
- Concrete slab thickness of 65mm to 95mm.
- The floor requires no mould or formwork meaning any size floor within the limits of the rollformed sections can be accommodated and produced on any flat surface.
- Any recesses are easily pre-formed into the finished slab.

This method of construction ensures accurate repeatability in size and quality of a transportable concrete floor



Transportable Concrete Floors FASTER LIGHTER EASIER

SPEEDFLOOR

Telephone: +64 9 303 4825
Email: sales@speedfloor.co.nz
PO Box 5420 Wellesley St, Auckland, New Zealand
www.speedfloor.co.nz