



FRAME ANY SPACE IN A FLASH.



TELESCOPIC PANELS

Introducing telescopic
internal stud, track
and wall panel
framing systems



Frame any space in a flash with our telescopic panel systems.

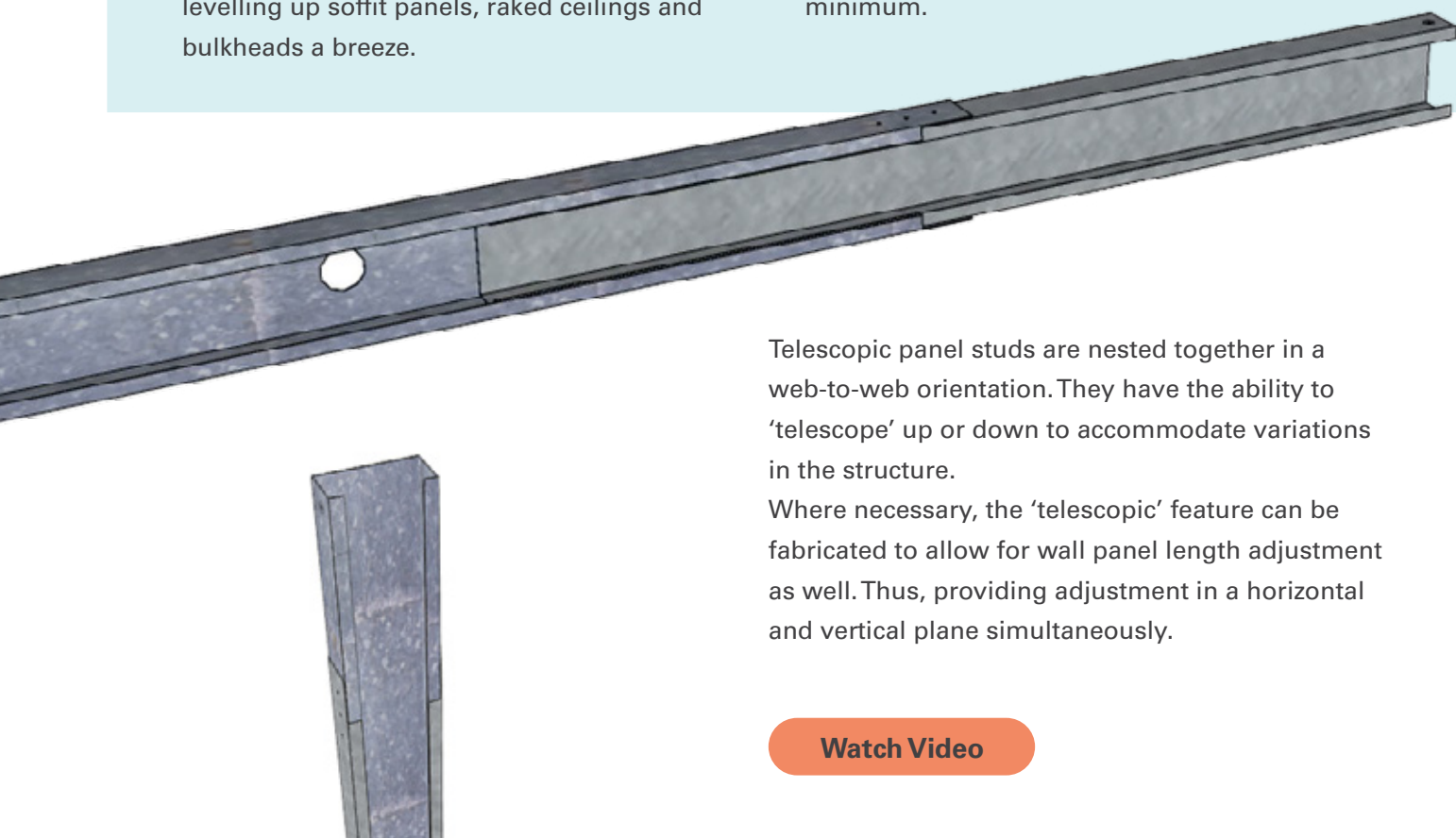
One of the biggest challenges with interior refits and refurbishments is that internal spaces are rarely, if ever, square.

Our telescopic panels make it easy to frame interiors, even when you have the most uneven and non-level spaces to work with. Extendable panels extend upwards and outwards on each side, so they always fit.

They cut down the time needed for constant measuring and remeasuring, snipping and adjusting onsite. Any doors and windows within the panels are fixed to retain perfectly square finishes. That means you save time and effort and reduce the cost of site wastage too. These panels are not just for walls; they even make levelling up soffit panels, raked ceilings and bulkheads a breeze.

The telescopic panels with 2-axis or multi-axis extensions are pre-assembled and compressed for delivery. Frames are strong, lightweight and retractable, making them easy to move around onsite, even in tight spaces.

They expand and secure with accuracy and strength for a perfectly straight outcome every time. At Rollforming Services, we manufacture our high-quality framing systems using the Howick X-TENDA™ 3600 roll-forming machine. Howick is the leading global exporter of roll-forming machinery and manufactures them here in NZ. Customers get added benefits from the technology's precision accuracy, so things like rework and wastage are kept to an absolute minimum.



Telescopic panel studs are nested together in a web-to-web orientation. They have the ability to 'telescope' up or down to accommodate variations in the structure.

Where necessary, the 'telescopic' feature can be fabricated to allow for wall panel length adjustment as well. Thus, providing adjustment in a horizontal and vertical plane simultaneously.

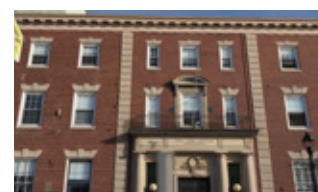
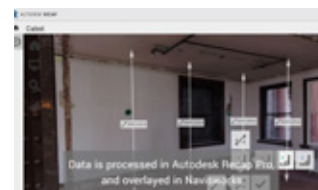
[Watch Video](#)

Telescopic Panel Features & Benefits

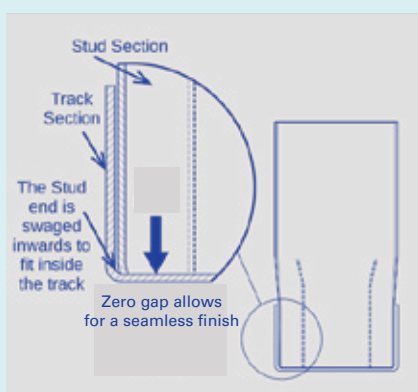
Working with light gauge steel (LGS) has previously had its limitations but with our telescopic design we have created a framing solution that is adjustable. Telescopically adjusted onsite without the use of power tools, they are light for safer manoeuvrability and much more accurate to square dimensions for cost saving efficiencies through less re-worked material wastage. Working with greater accuracy to install your wall panels in reduced time benefits the overall interior fit-out process by providing a truly straight wall to work with. And not just for walls, we offer solutions for bulkheads, soffit panels and doubleT flooring systems used in concrete flooring and external facades.

Suitable for:

- Internal non-load bearing walls
- Bulkheads
- Soffit panels
- Refurbishments
- Raked ceilings
- Historical buildings
- Contemporary abstract design buildings and facades
- High-end shop fit outs



Telescopic Panels - Special Features and Benefits:



- Reduced onsite wastage
- Ability to accommodate the variations in the structure
- Minimal site noise pollution due to reduced cutting of steel
- System flexibility to allow onsite adjustments
- Hot-dipped galvanised for superior corrosion resistance
- Reduced onsite installation time
- Easy installation
- Low freight costs
- Light weight handling for staff
- Swage formed for a flush finish

Gauge and Profile Options	Metric	Imperial
Gauge Range / Thickness	0.8 - 1.2mm	22-18"
Profile Width Options	64mm, 92mm, 150mm*	2 1/2-6"
Profile Flange Height Options	41.3mm	1 6/16"

*nominal not actual size

Applications



Soffit Panels

Soffit panels adjust up or down, across the frame to a set height. This makes accurate levelling up a breeze, as allowance can easily be made for non-level horizontal settings.



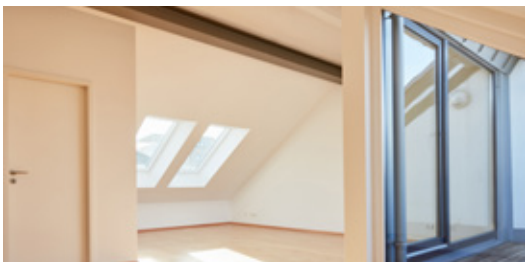
Wall Panels

Multi-Axis expanding panels adjust upwards and outwards on both sides. This allows for different angles within the available opening. Two-Axis Expanding panels adjust upwards and outwards on the one side. Within the frame itself, door and windows remain perfectly square.



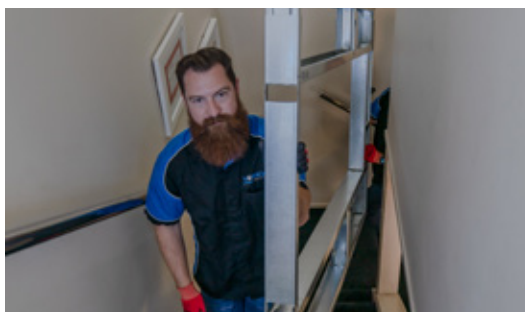
Bulkheads

Do away with the need to make onsite adjustments to accommodate for bulkhead spaces. Just line the panels up, drop to fit the area and line. Wiring up downlights with our pre-cut service gaps is a breeze too.



Raked or Vaulted Ceilings

Fitting out a space to the most demanding of contemporary or period home spaces with their tricky, arbitrary designs and shapes is easily accommodated with our slide-to-fit telescopic panels that reach unlimited lengths and widths with adjustment variances that avoid onsite reworking and error waste.



Refurbishment

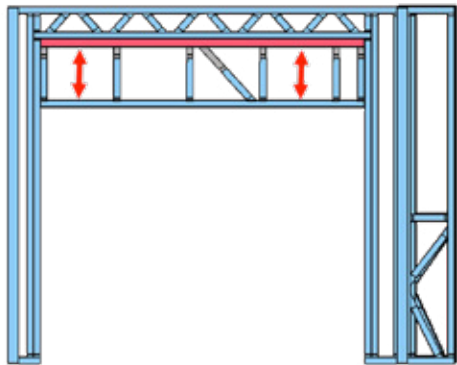
Often multi-storeyed refurbishment projects have limited workable space, limiting lift access, restricting workflows and schedules. Our light gauge steel panels are lightweight and retractable to squeeze into any area with ease. And for even tighter spaces the components can be flat packed and assembled at the place of installation for even easier site agility.



Double T Installation

Framing out between pre-cast concrete double T flooring systems can be done in a fraction of the time it takes using traditional methods. Pre-cut telescopic components effortlessly adjust to fill the space perfectly.

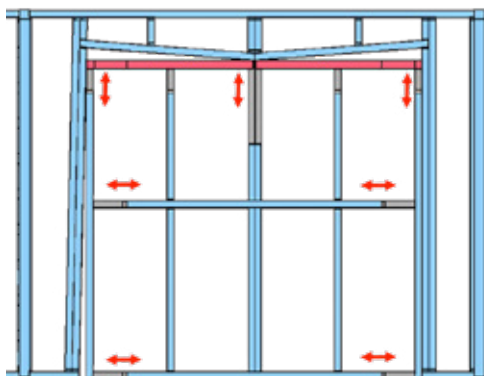
Configurations



Soffit Panels

Soffit Panels adjust up or down across the frame to a set height. This makes accurate leveling up a breeze as allowance can easily be made for non-level horizontal settings.

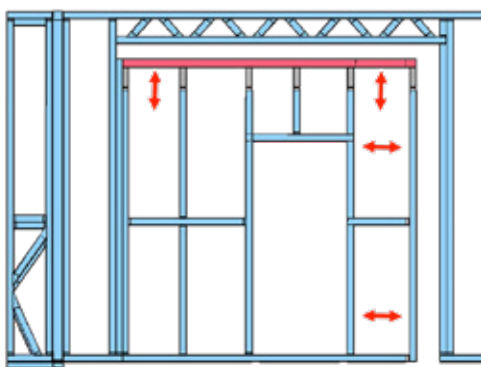
[Watch Video](#)



Multi-Axis Expanding Panels

Multi-axis expanding panels adjust upwards and outwards on both sides. This allows for different angles within the available opening.

[Watch Video](#)



Two-Axis Expanding Panels

Two-axis expanding panels adjust upwards and outwards to fill the available opening. Within the frame itself, door and windows remain perfectly square.

[Watch Video](#)

Kitset Telescopic Panels

Kitset Telescopic Panels are a speedy way to turn interior framing into a perfectly square result without the hassle of heavy lifting. These handy 3m x 3m kitsets arrive to site flat packed and are easily assembled and snipped to accommodate the interior space. There is no need to supply detailed design files, just place your order for how many kitsets your interior framing job requires. Having a ready-to-go option that can telescope into position onsite gives you adjustable control over uneven spaces. The final finishing process is so easy to complete as the certainty of working with a square finish allows for a more accurate measuring up and affixing of wall finishing products – spend less on wasted materials, waste disposal costs and time.



No designing required - they are ready to go



Flat packed and light weight for easy maneuverability



Fits any space up to 3m wide x 3m high

Gauge and Profile Options	Metric	Imperial
Gauge Range /Thickness	0.8 - 1.2mm	22-18"
Profile Width Options	63mm, 92mm, 150mm*	2 1/2-6"
Profile Flange Height Options	41.3mm	1 625"

*nominal not actual size



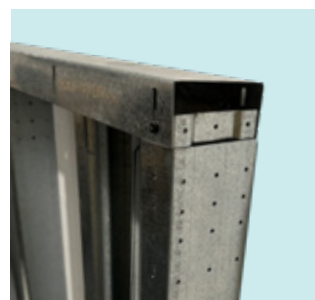
Pre-punched screw location



Pre-punched MEP holes



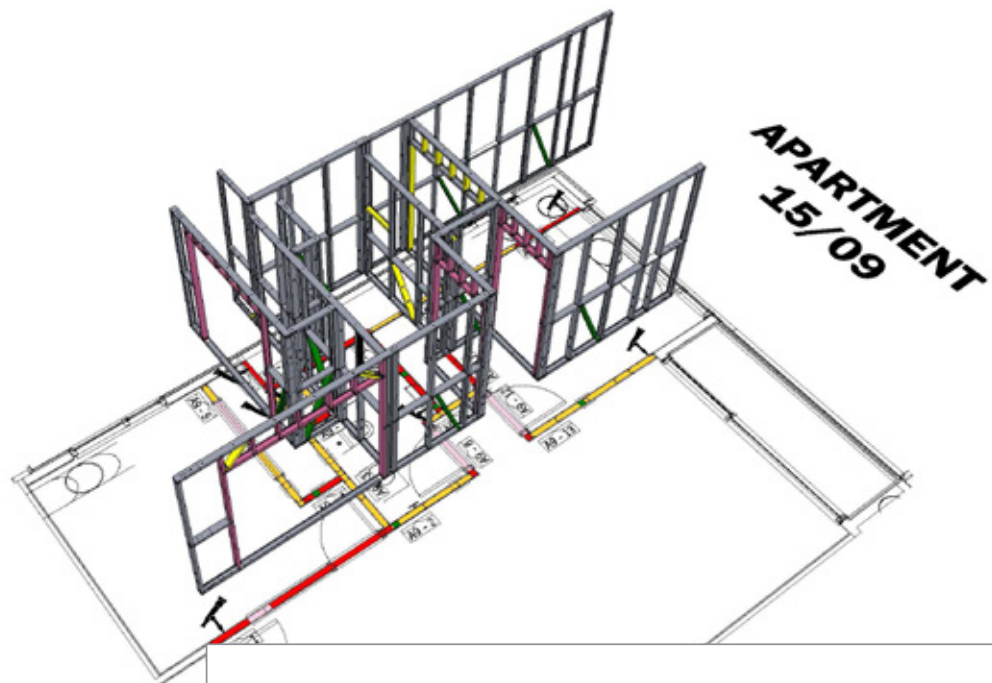
Pre-punched fixing holes



Pre-punched screw fixing holes for easy fixing.

Telescopic Panels for commercial interior framing, manufactured to your supplied designed files, cut the need for constant measuring cut the need for constant measuring and remeasuring, snipping, and adjusting onsite. Any doors and windows within the panels are fixed to remain perfectly square at all times. That means you save time, effort and reduce wastage too. And they make levelling up soffit panels a breeze.

Telescopic panels with two-axis or multi-axis extensions are pre-assembled and compressed for delivery or flat packed. Frames are strong, lightweight, and retractable, so they are easy to move around onsite, even in tight spaces. Then expand and secure for a fitting end, every time.



Generated with FrameBuilder-MRD Light Steel Designer, V5.1.3

Drawing	AB - 1	Distance from Ground	0.0 mm	Height	2650.0 mm	Length	~ 3043.9 mm	Screws	62
---------	--------	----------------------	--------	--------	-----------	--------	-------------	--------	----

Item No.	Qty	Profile	Dim.	Length
1	1	100x100	100x100	~ 3043.9 mm
2	1	100x100	100x100	~ 3043.9 mm
3	1	100x100	100x100	~ 3043.9 mm
4	1	100x100	100x100	~ 3043.9 mm
5	1	100x100	100x100	~ 3043.9 mm
6	1	100x100	100x100	~ 3043.9 mm
7	1	100x100	100x100	~ 3043.9 mm
8	1	100x100	100x100	~ 3043.9 mm
9	1	100x100	100x100	~ 3043.9 mm
10	1	100x100	100x100	~ 3043.9 mm
11	1	100x100	100x100	~ 3043.9 mm
12	1	100x100	100x100	~ 3043.9 mm
13	1	100x100	100x100	~ 3043.9 mm
14	1	100x100	100x100	~ 3043.9 mm
15	1	100x100	100x100	~ 3043.9 mm
16	1	100x100	100x100	~ 3043.9 mm
17	1	100x100	100x100	~ 3043.9 mm
18	1	100x100	100x100	~ 3043.9 mm
19	1	100x100	100x100	~ 3043.9 mm
20	1	100x100	100x100	~ 3043.9 mm
21	1	100x100	100x100	~ 3043.9 mm
22	1	100x100	100x100	~ 3043.9 mm
23	1	100x100	100x100	~ 3043.9 mm
24	1	100x100	100x100	~ 3043.9 mm
25	1	100x100	100x100	~ 3043.9 mm
26	1	100x100	100x100	~ 3043.9 mm
27	1	100x100	100x100	~ 3043.9 mm
28	1	100x100	100x100	~ 3043.9 mm
29	1	100x100	100x100	~ 3043.9 mm
30	1	100x100	100x100	~ 3043.9 mm
31	1	100x100	100x100	~ 3043.9 mm
32	1	100x100	100x100	~ 3043.9 mm
33	1	100x100	100x100	~ 3043.9 mm
34	1	100x100	100x100	~ 3043.9 mm
35	1	100x100	100x100	~ 3043.9 mm
36	1	100x100	100x100	~ 3043.9 mm
37	1	100x100	100x100	~ 3043.9 mm
38	1	100x100	100x100	~ 3043.9 mm
39	1	100x100	100x100	~ 3043.9 mm
40	1	100x100	100x100	~ 3043.9 mm
41	1	100x100	100x100	~ 3043.9 mm
42	1	100x100	100x100	~ 3043.9 mm
43	1	100x100	100x100	~ 3043.9 mm
44	1	100x100	100x100	~ 3043.9 mm
45	1	100x100	100x100	~ 3043.9 mm
46	1	100x100	100x100	~ 3043.9 mm
47	1	100x100	100x100	~ 3043.9 mm
48	1	100x100	100x100	~ 3043.9 mm
49	1	100x100	100x100	~ 3043.9 mm
50	1	100x100	100x100	~ 3043.9 mm
51	1	100x100	100x100	~ 3043.9 mm
52	1	100x100	100x100	~ 3043.9 mm
53	1	100x100	100x100	~ 3043.9 mm
54	1	100x100	100x100	~ 3043.9 mm
55	1	100x100	100x100	~ 3043.9 mm
56	1	100x100	100x100	~ 3043.9 mm
57	1	100x100	100x100	~ 3043.9 mm
58	1	100x100	100x100	~ 3043.9 mm
59	1	100x100	100x100	~ 3043.9 mm
60	1	100x100	100x100	~ 3043.9 mm
61	1	100x100	100x100	~ 3043.9 mm
62	1	100x100	100x100	~ 3043.9 mm

October 26, 2022

Rollforming
SERVICES LIMITED

www.rollforming.co.nz

[Watch Video](#)

Telescopic Component Details

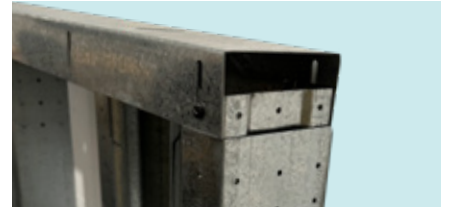
Telescopic Stud Details



Sturdy light gauge steel componentry made of NZ Steel, Zinc high tensile G550 with a yield and tensile strength of 550MPa



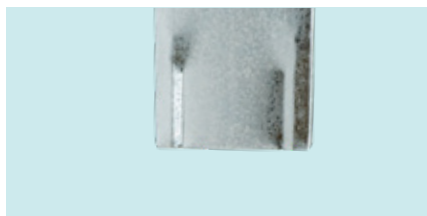
Pre-formed 32mm holes, allow for services to be easily accessed and fed throughout the walls.



Pre-punched screw fixing holes for easy fixing.



Connection point dimples provide easy and accurate componentry locating



The bottom of studs are swaged to make inserting into the wall track even easier



Telescopic stud connection holes at consistent spacing points for easy installation.

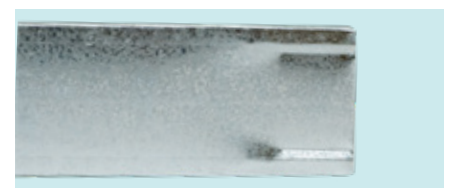
Telescopic Wall and Slotted Deflection Head Track Details



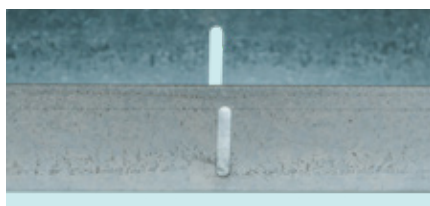
Wall track and Noggling dimples



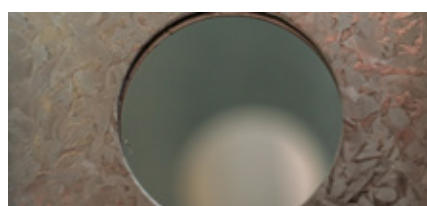
Installation fixing holes



Swaged stud that fits into track for a flush finish



Udeflection head tracks



MEP service holes



Lip notch

Telescopic Nogging Details

Features

- Our telescopic nogging is formed from the same sturdy steel as the stud and track and is specifically matched to provide structural support to the stud and applicable lining.
- Large service/MEP gaps are pre-formed into the nogging to allow for the ease of services to pass through the wall.
- Swaged nogging for easy insertion into stud.

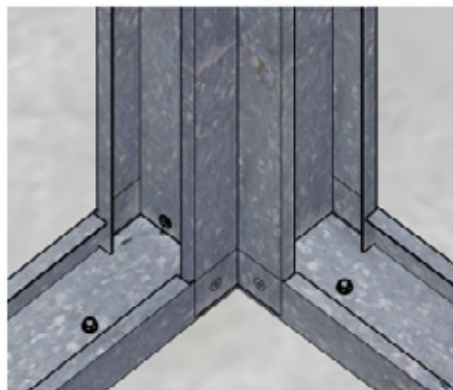
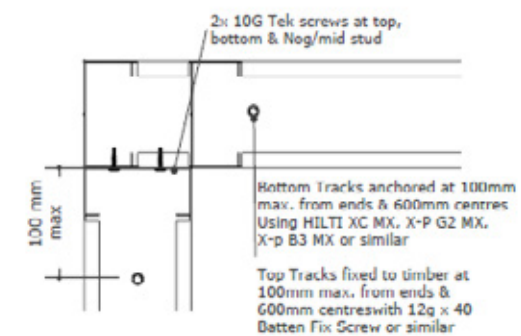


Features

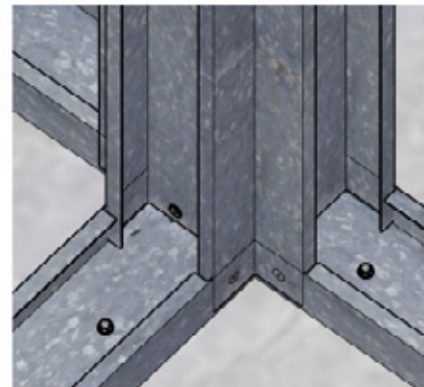
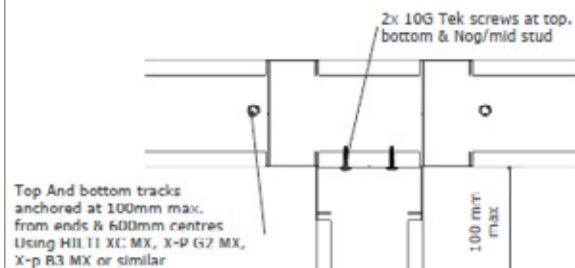
- Wall track and noggings come with dimples for easy installation. Each dimple is pre-punched at every connection point providing self-locating, quick and easy screw fixing.
- Installation fixing holes located at the centre of the frames as per project specifications
- Stud to track connection with dimple and fixing holes for positioning
- U deflection head tracks with 30mm slots to provide self-locating stud to head track and allowance for slab deflection - omitting the need for extra nogging at the head.
- MEP service hole

Connection Details

Corner Detail

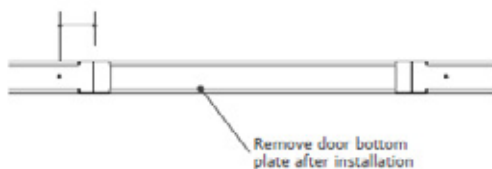


T Connection Detail

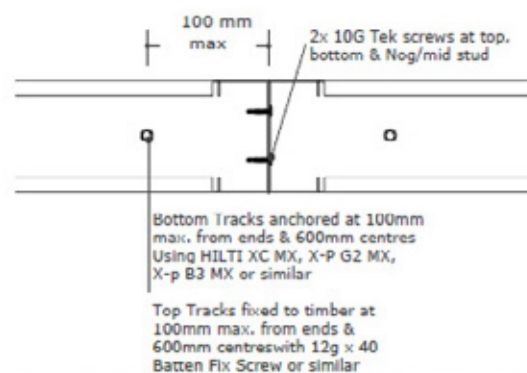


Door Opening Detail

Top and bottom tracks anchored at 100mm Max. from opening Using HILTI XC MX, X-P G2 MX, X-p B3 MX or similar



Panel to Panel Detail



Receiving your made to order panels and assembly plans

Once your order has been manufactured, you will receive your order either partially assembled or flat-packed for an autonomous assembly. Regardless, each order will be despatched with 2 sets of plans:

1. The customised floor plans
2. The customised wall panel assembly plans



Customised Floor Plans

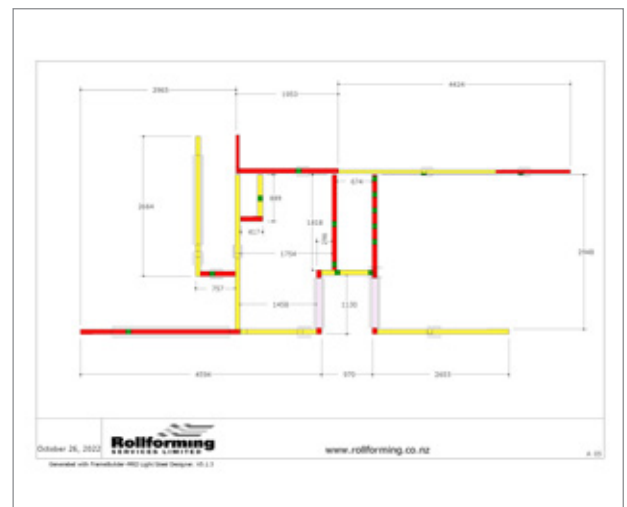
These plans provide the locational layout of the panel systems over the full site build drawings and the specific directions each individual wall panels are to be installed. It is important to pay particular attention to this plan to install in the correct orientation.

Customised Wall Panel Assembly Plans

We provide a secondary customised set of plans that detail the wall panel dimensions and their respective orientation of componentry for a clear guide of install methodology.

The use of our numbering system as marked on each physical component matches this plan, making light work of flat-packed assembly anywhere.

Taking the time to preview these plans on receipt and have the customer check them over prior to install is a recommended preliminary step to ensure what has been supplied matches the up-to-date build site requirements.



Standards and Building Codes

Rollforming Services Ltd uses the following standards in its procurement, manufacturing, testing, design and marketing policies for compliance with the respective Building Codes of Australia and New Zealand

Design Standards:

AS/NZS1170 Part 0

Structural design actions- General Principals

AS/NZS1170 Part 1

Structural design actions – Permanent imposed and other actions

AS/NZS1170 Part 2

Structural design actions – Wind actions

AS/NZS1170 Part 4

Structural design actions – Earthquake actions in Australia

NZS/1170 Part 5

Structural design actions – Earthquake actions in New Zealand

AS/NZS4600

Cold-formed steel structures

Steel is purchased to the following standard:

AS1397

Continuous hot-dip metallic coated steel sheet and strip – coatings of zinc and zinc alloyed with aluminium and magnesium

Quality Assurance

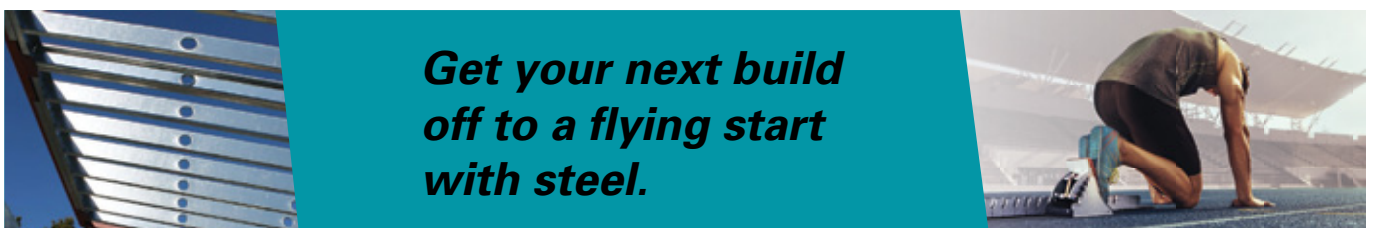
ISO 9001

Quality Management Systems

Disclaimer:

Original manufacturer Rollforming Services recommends its products and systems are installed by a qualified tradesperson and according to the relevant codes and standards. Before acting on any advice or opinion in this manual, you should seek professional advice in light of unique architectural and building requirements.

Fire rating of framing to be confirmed by lining board manufacturer.



***Get your next build
off to a flying start
with steel.***

Helpful online how to videos

Rollforming Services Telescopic Panel Systems

[Watch Video](#)

Configurations

Soffit
Panels

[Watch Video](#)

Multi-Axis
Expanding
Panels

[Watch Video](#)

Two-Axis
Expanding
Panels

[Watch Video](#)

3x3 Kitset Telescopic Panels

[Watch Video](#)

Kitset Telescopic Panels Installation Steps

[Watch Video](#)

Telescopic Panels - Designed

[Watch Video](#)